



GRANVILLE STATION

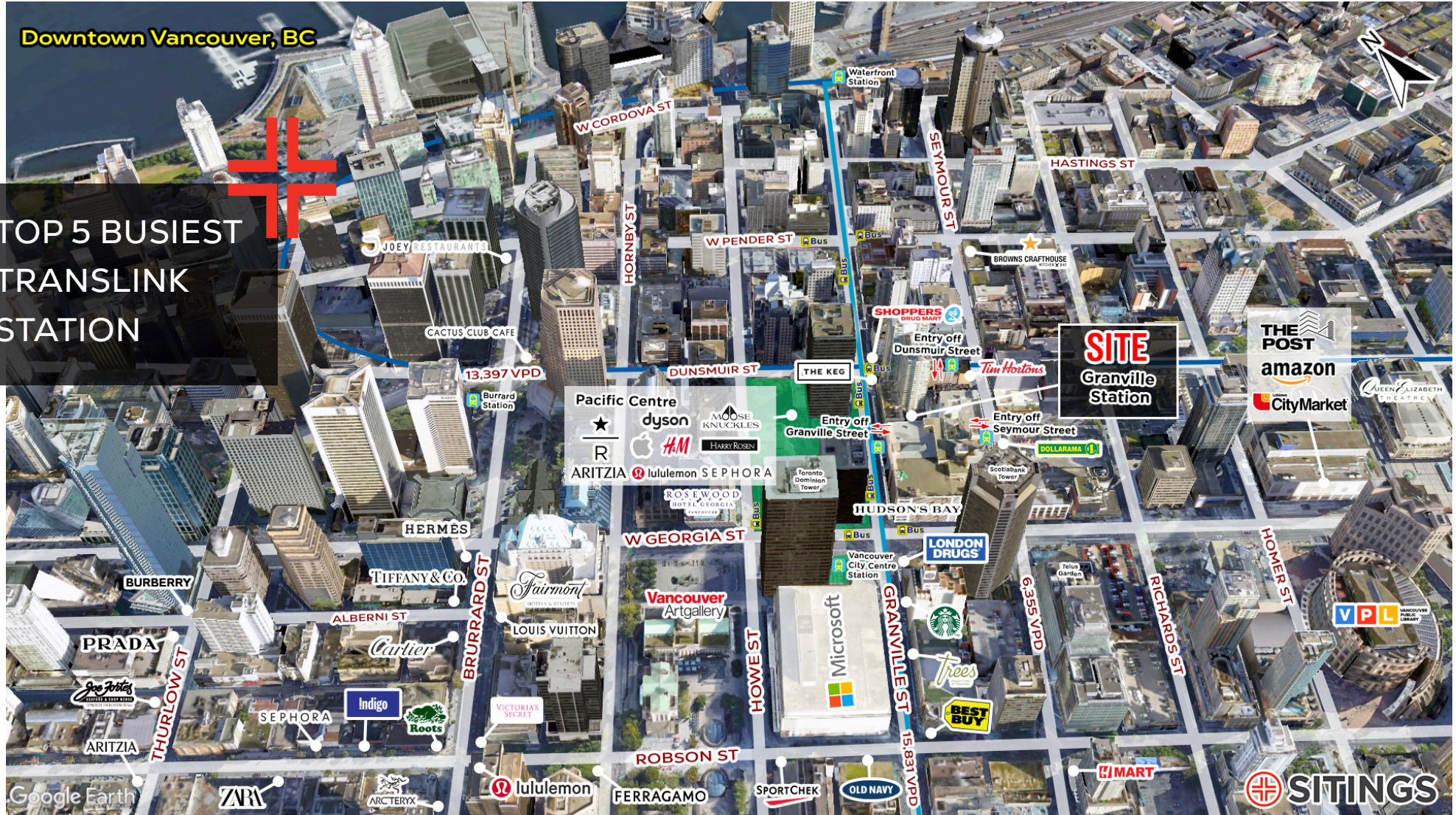
Granville SkyTrain Station (Expo Line)
Downtown Vancouver, BC

LEASING BROCHURE



PROJECT SUMMARY

Now leasing 349-square-foot retail unit at Granville SkyTrain Station in downtown Vancouver. Conveniently located off Granville St between Georgia and Dunsmuir Streets, this station is a key stop on the Expo Line, servicing a bustling retail and office hub in downtown Vancouver. Accessed through various entrances, including through The Bay/ Pacific Centre & off of Seymour St. or Dunsmuir St, the retail unit is positioned just before the faregates to capture all riders. With its strategic location and improved layout, this is a great opportunity for retailers in Downtown Vancouver!



This document/email has been prepared by Sitings Realty Ltd. for advertising and general information only. Although information contained herein is from sources we believe reliable, Sitings Realty Ltd. makes no guarantees, representations or warranties of any kind, expressed or implied, regarding the information including, but not limited to, warranties of content, accuracy and reliability. This document/email is subject to errors and omissions and any interested party should undertake their own inquiries as to the accuracy of the information. Sitings Realty Ltd. excludes unequivocally all inferred or implied terms, conditions and warranties arising out of this document and excludes all liability for loss and damages arising there from. All areas, measurements and dimension herein are approximate, interested parties/tenant are to verify measurements if important to them. This document/email is not an inducement representation.

DETAILS

✦ Size: 349 SF

✦ Timing: Available Immediately

✦ Base Rent: Contact Listing Agent

✦ Power Capacity Limited (90 amps service)

✦ Additional Rent: \$17.00 PSF (2023 est.)

✦ Improved retail unit at entrance of Granville Station concourse & connected to the Hudsons Bay, Pacific Centre, Seymour St and Dunsmuir St

AREA FEATURES



SkyTrain every 3-5 mins & servicing over 20 bus routes



Ridership: 24,000 AVG people/day in and out



Adjacent to busy retail node including Pacific Centre Mall, Hudsons Bay and Granville St



Servicing a dense downtown daytime employment node

VIRTUAL TOUR



[CLICK HERE](#)

CONTACT

NANCY BAYLY

Personal Real Estate Corporation
Sitings Realty Ltd

604.628.2580

nancy@sitings.ca

T Key Regional Transit Connections

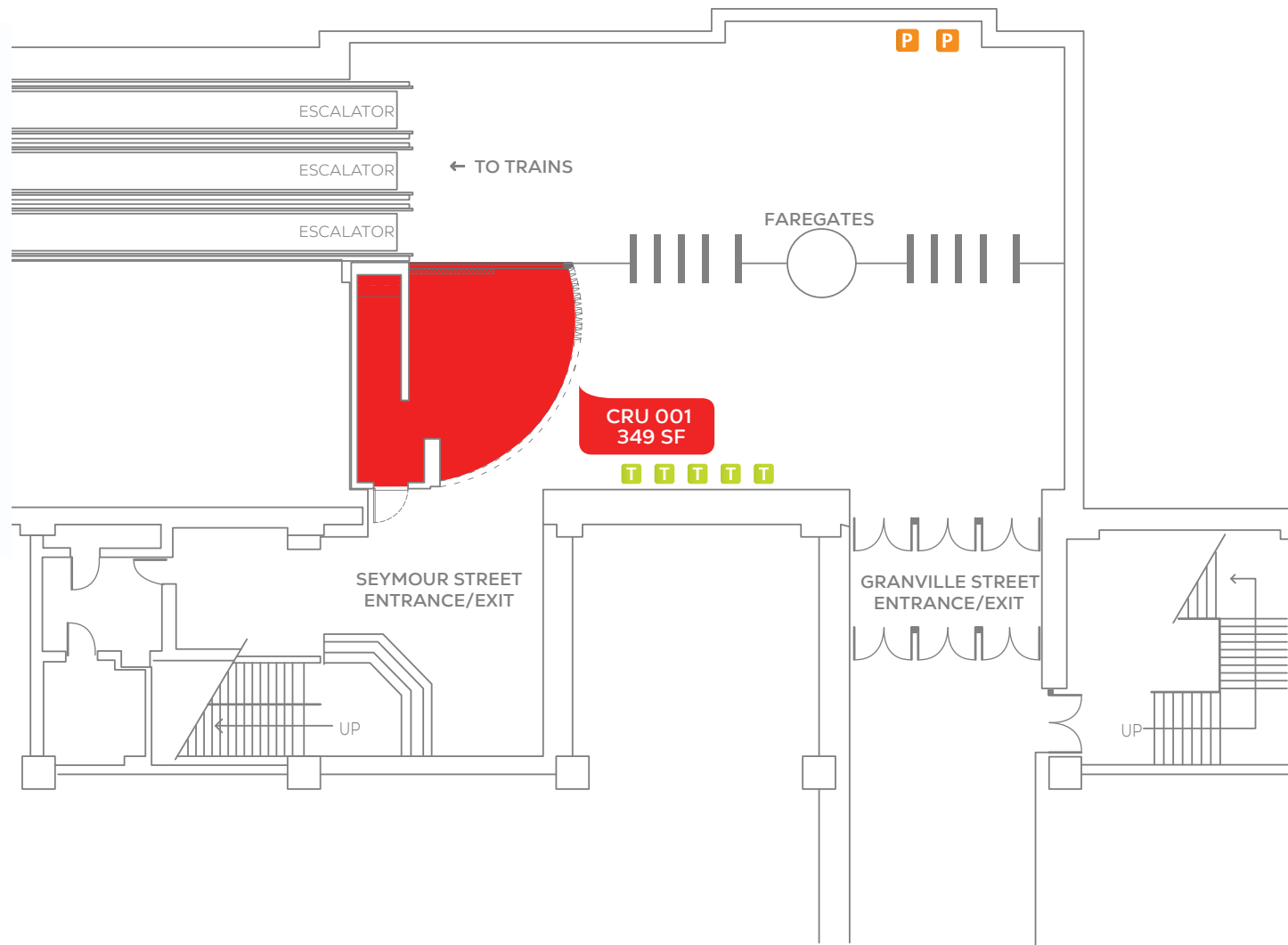


SITE PLAN

 VIRTUAL TOUR

 TICKET VENDING MACHINE

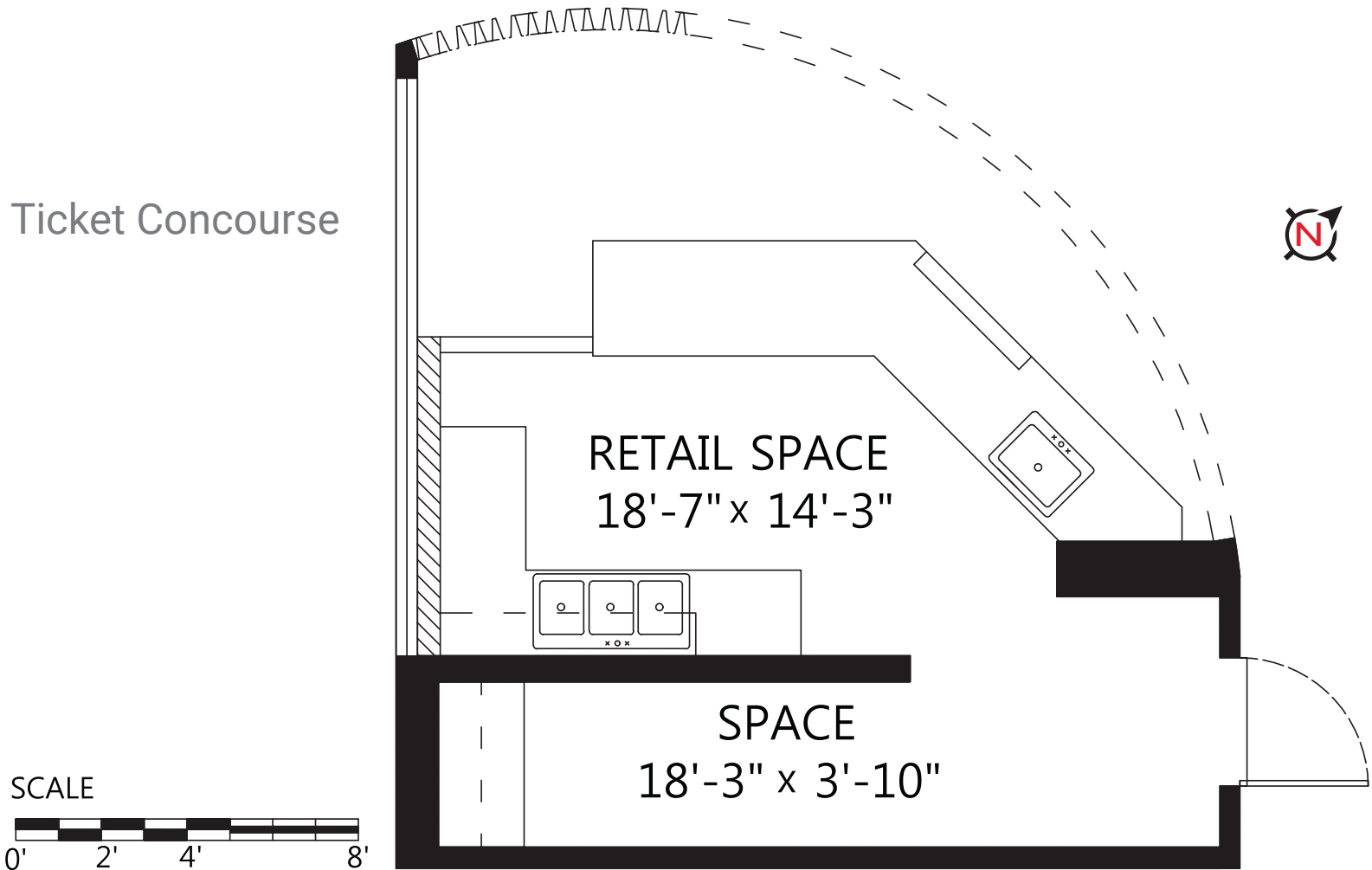
 PEPSI VENDING MACHINE



FLOOR PLAN

 VIRTUAL TOUR

Ticket Concourse

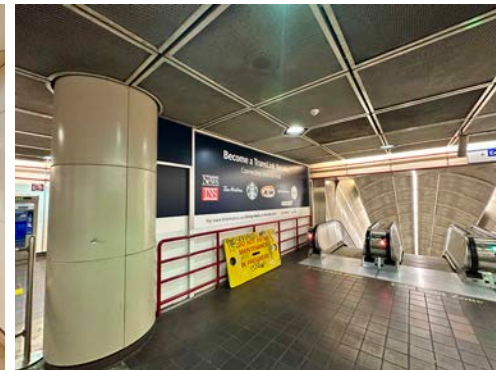
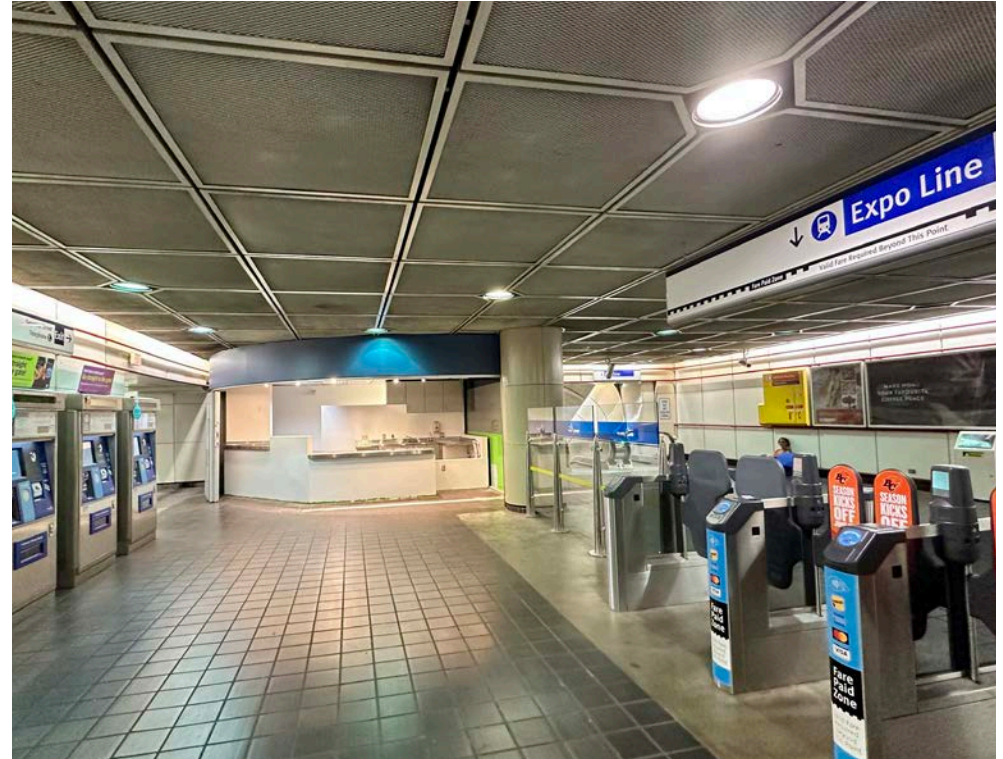


*The floor plan is not suitable for architectural/construction,
square footage-method ANSI Z765 used & is covered under E&O*



EXTERIOR PHOTOS

 VIRTUAL TOUR



INTERIOR PHOTOS

 VIRTUAL TOUR

